

# GLOBAL VILLAGE HAWAII

— *be* —

**BOLD**

— *be* —

**BRAVE**

— *change* —

**YOUR WORLD**



# HAWAII

Our mission is to provide a positive, supportive and inspiring learning environment for English language students through our commitment to the highest standard of quality in the areas of academics, extracurricular activities, accommodations and student services.



**WELCOME TO GV HAWAII,** where students excel academically in what can only be described as paradise. GV Hawaii delivers a quality educational experience to students from across the globe. Once you join our family, your English will rapidly improve on our warm, safe, and friendly island. At GV Hawaii, you will achieve your educational goals, have unforgettable adventures, and leave with wonderful memories and Aloha.

[www.gvenglish.com/hawaii](http://www.gvenglish.com/hawaii)



### Island of Oahu

1,432,603  
population

271  
annual days  
with sunshine

180  
kms of  
coastline

### OCEAN TEMPERATURE



22°C  
winter



28°C  
summer



# GV HAWAII

excel | achieve | lead



## ATTRACTIONS

- Polynesian Cultural Center
- Waikiki Beaches & Sunset
- Diamond Head Crater
- Pearl Harbor
- Wet-n-wild Water Park
- Hanauma Bay Nature Preserve
- Bishop Museum



## FESTIVALS

- Merrie Monarch Hula
- Honolulu Marathon
- King Kamehameha Day
- Ukelele Festival
- Hawaii Intl' Film Festival
- Surfing Championships
- Okinawan Festival
- Korean Festival
- Chinese New Year Festival
- Parades & Fireworks Events

AVERAGE  
TEMPERATURE



24°-29°C

## TRAVEL INFO

You can easily get around by car rental, shuttle, taxi or Oahu's public bus system. Many visitors also enjoy taking bus tours to conveniently explore the Island. Others rent bicycles, mopeds and motorcycles.

For more information on Hawaii, transit fares, routes, popular attractions and other useful information, visit:

[www.gohawaii.com](http://www.gohawaii.com)

[www.thebus.org](http://www.thebus.org)

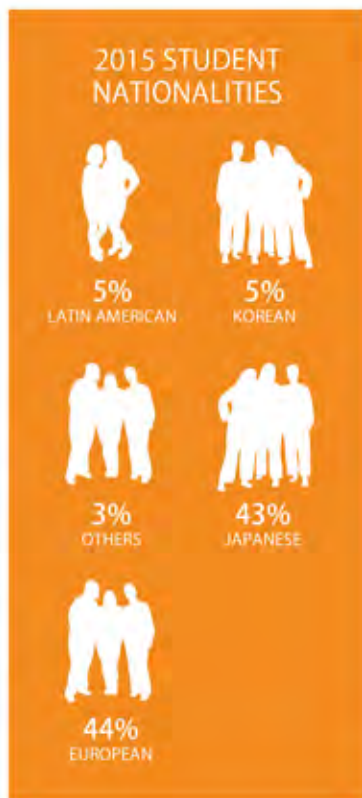
[www.waikikitrolley.com](http://www.waikikitrolley.com)





# SCHOOL INFORMATION

**GLOBAL VILLAGE HAWAII** offers the highest quality education at a level that is accredited both locally and internationally so that our students can have the confidence that their English proficiency will be recognized, regardless of where they choose to live and work.



Nationally & internationally accredited

13  
classrooms  
with ocean and  
mountain views

1  
lounge with  
ocean view

25  
flatscreen  
computers

## FACILITIES

- Free wireless internet
- Great location, near beach, shopping and bus
- School is located in a beautiful business building
- High definition TV, lockers vending machines
- Average class size 11 students (max 15)
- Minimum age 16 (adult courses)

AIRPORT DISTANCE



20  
minutes  
by car to the school



ACCREDITATIONS & MEMBERSHIPS



PATHWAYS & PARTNERSHIPS





# PROGRAMS

## General English Program (8 levels)

- Standard – 16 lessons/week
- Intensive – 20 lessons/week
- Super Intensive – 25 lessons/week

## Specialized Programs

- Academic Year Program
- Semester Gap Program
- University Pathway Programs
- Cambridge Programs: FCE, CAE & CPE
- Cambridge Support Package
- Private Lessons
- Semi-Private Lessons
- Business English Program
- TOEIC
- TOEFL

## Options

- |                |                                 |
|----------------|---------------------------------|
| Hawaii Tourism | English Through Movies          |
| Power Speaking | English Through Music & Theater |
| Conversation   | Cambridge Exam Skill Building   |
| Vocabulary     | Independent Studies             |
| Grammar        | IELTS Preparation               |
| TESOL          | TOEIC Preparation               |
| Pronunciation  | TOEFL Preparation               |

## English + Programs

- English + Surfing (Private Lessons)
- English + Hula
- English + Ukulele
- English + Fitness
- English + Yoga

## Junior Programs 12 – 17 years old

### Teen Activity Program

- 2016:** July 05 - July 29 & Aug 01 - Aug 26
- 2017:** January 03 - January 27  
July 03 - July 28 & July 31 - August 25



## GENERAL ENGLISH PROGRAM

16

lessons per week/Monday – Thursday

20

lessons per week/Monday – Friday

25

lessons per week/Monday – Friday  
Includes 1 option. Student Visa required.

## START DATES (2016)

- January 19, February 16, March 14, April 11, May 09, June 06, July 05, August 01, August 29, September 26, October 24, November 21, December 19

## START DATES (2017)

- January 17, February 13, March 13, April 10, May 08, June 05, July 03, July 31, August 28, September 25, October 23, November 20, December 18

\*Students can start each week

\*One lesson – 50 minutes

## WEEKLY SCHEDULE

MORNING SESSION		OPTION	AFTERNOON SESSION			
8:30 – 10:10 AM	BREAK	10:30 - 12:10 PM	12:20 – 1:10 PM	1:20 – 3:00 PM	BREAK	3:20 – 5:00 PM
<b>INTERMEDIATE TO ADVANCED LEVELS 5 - 8</b>				<b>BEGINNER TO INTERMEDIATE LEVELS 1 - 5</b>		
General English Program (GEP) Business English Program (BEP) TOEFL, TOEIC Cambridge Preparation* Teen Activity Program*		Grammar Conversation Pronunciation Vocabulary TOEFL Prep TOEIC Prep Advanced Grammar Cambridge IELTS		General English Program (GEP) TOEFL, TOEIC		
Language Use, Communication, Combined Skills				Language Use, Communication, Combined Skills		

\*Alternate morning schedules, see website

\*Student counseling is available to provide support to students: academic, university, accommodation, immigration and life issues.



# ACCOMMODATION

**ONE OF THE MOST IMPORTANT STEPS** in planning any study abroad experience is deciding where you will live while you study. Whether you want to live with a host family, stay in a GV Hawaii residence, or live in a Waikiki condominium, we have plenty of options to fit your expectations.

## HOMESTAY

- Choose Homestay for a warm and friendly local experience
- Includes a single room with lighted study area and wireless internet access
- Full meal plan with self-serve breakfast and lunch, and family-style dinner
- Self-Catering option available for students choosing Homestay without meals

**Please note:** Students may arrive no earlier than Saturday and leave no later than Sunday. Students under 18 years old in Hawaii have a surcharge of \$30 per week on Homestay or Self-Catering.



## ACCOMMODATION OPTIONS

ACCOMMODATION TYPE	HAWAII
Homestay – Full Board – Single Room	✓
Homestay - Self-Catering	✓
Furnished Apartment/Guest Suite	✓
Hotel	✓
Residence	✓
Dormitory	✓

## ALTERNATIVE ACCOMMODATIONS

### KAIMUKI & KAPIOLANI RESIDENCES

- Offers private, modern, air conditioned rooms with shared bathroom facilities
- About 10-20 minutes bus ride to GV Hawaii
- Close to Waikiki and GV Hawaii
- Facilities include an outdoor BBQ lounge area, wireless internet access, coin operated laundry facilities, and bike racks

### WAIKIKI APARTMENTS

- Offers private, air conditioned rooms with kitchenette and private bathroom
- Located in the heart of Waikiki, walking distance to the beach
- Internet access and coin operated laundry facilities available
- Free Wi-Fi

HOMESTAY  
AVERAGE TIME TO  
SCHOOL BY BUS

60  
minutes

WAIKIKI APTS  
BUS RIDE TO  
GV HAWAII

15  
minutes



# ACTIVITIES

## SERIOUS LEARNING, SERIOUS FUN!

As part of our GV 360° Personal Care service, we offer students at least 20 exciting and truly memorable activities each month.

## SPORTS & EVENTS

- Surfing the most famous surf spots in the world!
- Hula: a great way to experience the culture
- Snorkeling
- Beach volleyball
- American football
- Beach barbecues

## DAY TRIPS

- Neighbor island trips
- Amazing sunset cruises
- Circle Island tours
- Swim with dolphins
- Scenic nature hikes
- Whale watching cruises
- Skydiving
- Stand up paddleboarding
- Kayak

Our Activity Coordinator takes great pride in organizing culturally enriching experiences that will demonstrate the uniqueness of Hawaii.

Each month a new creative calendar will be posted in-house, so you can see the full range and diversity that GV Hawaii has to offer.

While you are taking part in these carefully planned activities, you and your fellow students from around the world will be able to practice your communication skills developed in the classrooms and have a great time, too.



THAT'S WHAT THE GV EXPERIENCE IS ALL ABOUT -  
**SERIOUS LEARNING, SERIOUS FUN!**





# DISCOVER GLOBAL VILLAGE HAWAII

## WE HAVE A NUMBER OF USEFUL DIGITAL TOOLS

to help give you a better understanding of what a GV experience is all about. To start with, GV Hawaii has its own Facebook page. Why not see what past and present GV students have to say about their time at our school?

## FOLLOW US ON FACEBOOK / TWITTER

[www.facebook.com/GVHawaiiOhana](http://www.facebook.com/GVHawaiiOhana)  
[www.facebook.com/GVHawaii.jp](http://www.facebook.com/GVHawaii.jp) (Japanese)  
[twitter.com/GVHawaiiOhana](https://twitter.com/GVHawaiiOhana)  
[twitter.com/GVHawaii\\_jp](https://twitter.com/GVHawaii_jp) (Japanese)

## WATCH OUR YOUTUBE FEED

GVEC: [www.youtube.com/GVEnglish](http://www.youtube.com/GVEnglish)  
Hawaii: [www.youtube.com/GVEnglish/playlists](http://www.youtube.com/GVEnglish/playlists)

## BROWSE OUR PHOTOS AND BLOGS

[www.instagram.com/GVHawaiiOhana](http://www.instagram.com/GVHawaiiOhana)  
[www.instagram.com/GVHawaii\\_jp](http://www.instagram.com/GVHawaii_jp) (Japanese)  
[www.globalvillagehawaiiohana.wordpress.com](http://www.globalvillagehawaiiohana.wordpress.com)

[www.gvenglish.com/hawaii](http://www.gvenglish.com/hawaii)  
[www.gvhawaiienglish.com](http://www.gvhawaiienglish.com)

Join our Conversation:  
[www.twitter.com/GVECMARKETING](https://twitter.com/GVECMARKETING)



## GV360° VIRTUAL TOURS

[www.gvenglish.com/Virtual\\_Tour](http://www.gvenglish.com/Virtual_Tour)

ESL International Corporation, dba Global Village Hawaii, is independently owned and operated. Global Village Hawaii does not discriminate on the basis of sex, race, ethnic origin or religion.



1440 Kapiolani Blvd, Suite 1100  
Honolulu, HI 96814 USA  
[hawaii@gvenglish.com](mailto:hawaii@gvenglish.com)  
TEL: +1 808 943 6800  
FAX: +1 808 943 6400

## GOING MOBILE – TAKE US WITH YOU ON THE NEW GV MOBILE APP!

GV MOBILE APP  
AVAILABLE ON



android



apple



amazon

"GVH is friendly and has a homey atmosphere. Every teacher has a passion for teaching English and it is easy to understand their classes. I made a lot of friends from many foreign cultures. My host family is very kind and always thinking about me and offers to help me. The school is the best location with easy access to Waikiki and Ala Moana. There is a lot of support from the teachers, staff and students to help with any situation. If you come to GVH you can have an amazing experience."

– Kumiko, Japan

